

RHIANNON 195

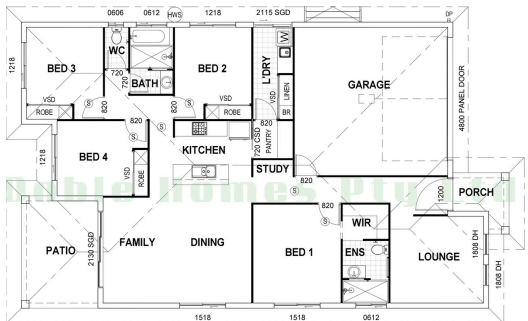


100 Day
Build*



- ✓ WESTINGHOUSE APPLIANCES
- ✓ 2.7M CEILINGS
- ✓ SOLAR READY
- ✓ SMOOTH RENDER
- ✓ GARAGE DEADBOLT
- ✓ C2 WIND COMPLIANT
- ✓ SPILT SYSTEM A/C
- ✓ FRIDGE WATER TAP
- ✓ TILES TO CEILING IN SHOWER
- ✓ STONE BENCHTOPS TO KITCHEN
- ✓ SECURITY FEATURES THROUGHOUT

FLOOR PLAN



HOUSE SIZE

LIVING: 141.20m² GARAGE: 37.20m²
PATIO: 12.84m² **TOTAL: 195.26m²**