

TEIGAN 200

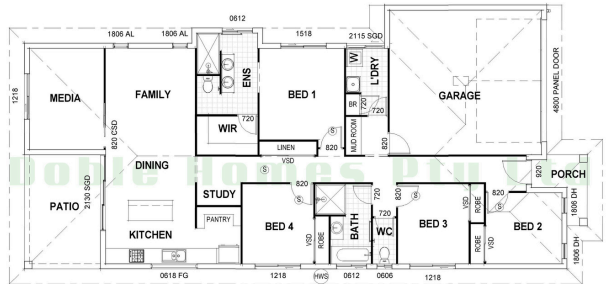


100 Day Build*

4 Beds, 2 Baths, 2 Car Spaces, 200m²

- ✓ WESTINGHOUSE APPLIANCES
- ✓ 2.7M CEILINGS
- ✓ SOLAR READY
- ✓ SMOOTH RENDER
- ✓ GARAGE DEADBOLT
- ✓ C2 WIND COMPLIANT
- ✓ SPILT SYSTEM A/C
- ✓ FRIDGE WATER TAP
- ✓ TILES TO CEILING IN SHOWER
- ✓ STONE BENCHTOPS TO KITCHEN
- ✓ SECURITY FEATURES THROUGHOUT

FLOOR PLAN



HOUSE SIZE

LIVING: 146.02m² GARAGE: 37.00m²
PATIO: 13.50m² TOTAL: 200.46m²

Images are for illustration purposes only. * Prices and Facades may depict upgrade options not supplied by Doble Homes, prices do not include Landscaping, Fencing, Furniture, Window Furnishings & Decking. Please contact Doble Homes for more information. *100 Day Build Time is deemed 100 Business Days*, with the allowance of Wet Days, and a 30km Radius from the Doble Homes Office.